



Public Health
Idaho North Central District

IMPACT

REPORT

FY25

LETTER FROM THE DIRECTOR

“What is Public Health? In three words, it’s Prevention, Promotion, and Protection. These three words are the driving force for all activities that take place in local Public Health.

Our local Board of Health reviews our services and activities on a regular basis, making sure we hold to our mission of:

- **Prevent Disease**
- **Promote Healthy Lifestyles**
- **Protect & Prepare the Public Against Health Threats**

Local public health exists to protect and promote the health and well-being of communities by preventing disease, prolonging life, and creating conditions for people to thrive. We address health issues at the community level through education, policy-making, and direct services.

Public Health operates according to the highest level of professionalism and ethics to inspire public confidence and trust. As always, we could not accomplish our work without the multitude of partners that share our enthusiasm and commitment to preventive health. Many of these partners include YOU, the public, as you volunteer to assist us in coalitions, committees, and work done in our communities. Thank you for your dedication and commitment to these projects. We value your support and your enthusiasm. Public Health will continue to be accountable to our public as we strive to protect and improve the health of our community.”



Kayla Sprenger - District Director



FY25 UPDATES



STAFFING UPDATES

- At the start of FY25 we had 47 staff members
- During FY25 we had 3 staff members retire, 5 staff leave, and 3 new hires
- We ended FY25 with 42 staff members and a retention rate of 83%

PUBLIC HEALTH PREPAREDNESS HIGHLIGHTS

- PHP helped plan, coordinate and conduct two Active Threat Functional Exercises:
 - St. Mary's Clinic in Kamiah in December and Syringa Hospital in Grangeville in May
 - The exercise at St. Mary's was the largest exercise our district has seen in about a decade, with players and observers from three other healthcare facilities, several EMS agencies, local law enforcement, fire, Life Flight, and emergency management
- Rewrote Continuity of Operations Plan to incorporate technology advancements

COMMUNITY HEALTH IMPROVEMENT PLAN

- The CHIP priorities identified included:
 - Access to Care
 - Behavioral Health
 - Healthy Lifestyle Promotion
- For each priority there are activities focused on:
 - Youth or school services
 - Reducing socioeconomic barriers
 - Supporting aging-in-place



PROGRAMS & SERVICES



CLINICAL & EPIDEMIOLOGY

- Immunizations
- Communicable disease investigations
- Disease containment & mitigation

COMMUNITY HEALTH

- Tobacco cessation
- Vaping prevention
- Opioid education
- Drug overdose prevention
- Suicide prevention
- Injury prevention/Fit and Fall Proof®
- Oral Health

WIC

- Supplemental nutritious foods for pregnant & breastfeeding women, & children from birth to age 5
- Nutrition education & counseling at WIC clinics
- Screenings & referrals to other health, welfare, & social services

HOME VISITATION

- Personal in-home visits
- Peer support
- Hearing & vision screenings
- Developmental screenings
- Resource network

ENVIRONMENTAL HEALTH

- Childcare health & safety
- Food protection & inspection
- Public swimming pool inspections
- Air quality
- Drinking water systems
- Land use development
- Solid waste management

PREPAREDNESS

- Plan & prepare for emergency response & recovery efforts
- Support counties, hospitals, & medical facilities
- Medical Reserve Corps

CLINICAL HEALTH & EPIDEMIOLOGY

IMMUNIZATIONS

PH-INCD holds vaccination clinics throughout the year offering vaccines for children from birth to 18 years old as well as adult flu vaccines.

46

children's immunization clinics

91

children received vaccines

208

childhood vaccine doses administered

9

adult flu clinics

46

adults vaccinated for the flu



PREVENT DISEASE

1101

COMMUNICABLE DISEASES REPORTED

DISEASE INVESTIGATIONS

The epidemiology team conducts disease investigations to identify trends and prevent the spread of disease through containment and mitigation efforts.

CASES OF DISEASE

198

chlamydia

38

pertussis

395

norovirus

41

campylobacter

5

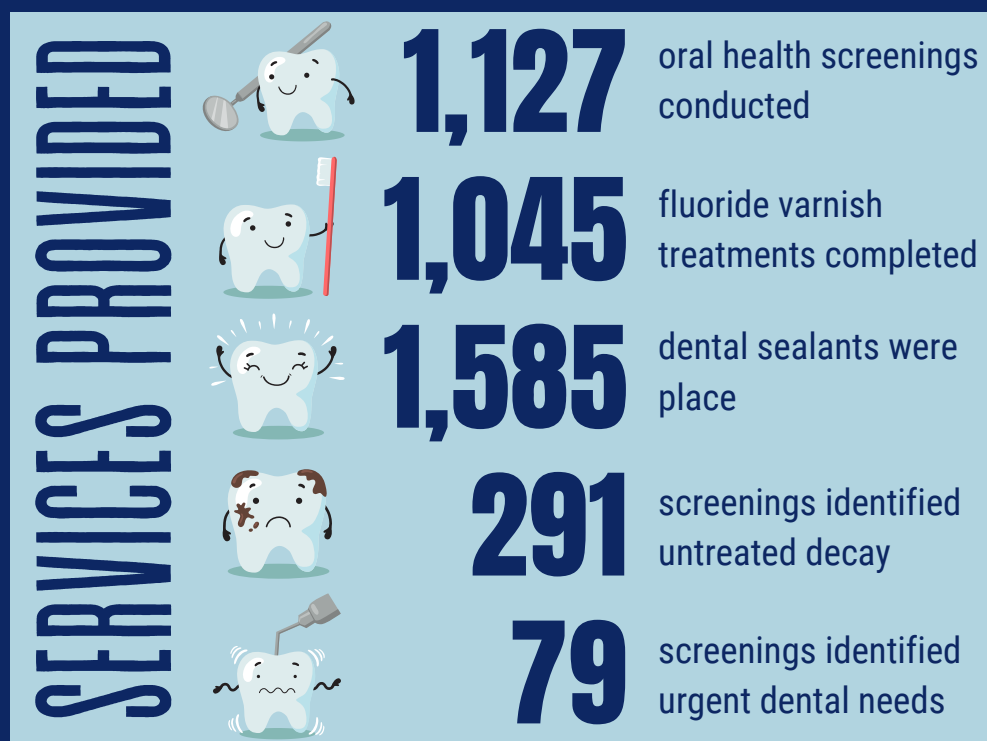
giardiasis

6

salmonella

YOUTH ORAL HEALTH

PH-INCD's Dental Hygienist provides screenings, fluoride varnish treatments, and dental sealants in local schools as well as conducts screenings and fluoride varnish clinics at our office and local HeadStart locations.



DEFINITIONS:

Oral Health Screenings:

screenings to identify potential oral health issues

Fluoride Varnish: strengthens tooth enamel, helping make teeth more resistant to decay

Dental Sealants: act as a physical barrier on the teeth which helps prevent decay

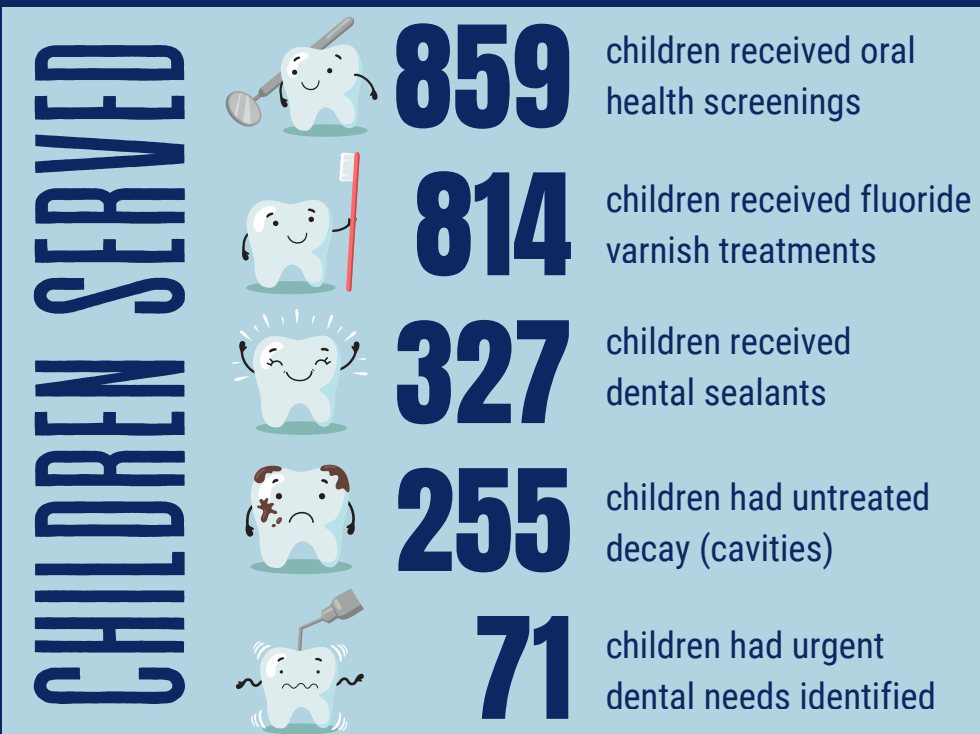

Untreated Decay: holes (cavities) in the tooth due to damage to the tooth's enamel

Urgent Dental Needs: situations beyond untreated decay that require immediate attention

WHO WE SERVED

School-based services: at 17 schools across the region

Fluoride varnish clinics: at 10 early childhood education centers three times per year



COMMUNITY HEALTH

PROMOTE HEALTHY LIFESTYLES

TOBACCO

PREVENTION & CESSATION PROGRAMS

END



ENDING NICOTINE DEPENDENCE

260 YOUTH WENT THROUGH END

END is evidence-based nicotine intervention education.

CATCH MY BREATH

VAPING PREVENTION

718

STUDENTS WENT THROUGH THE CATCH PROGRAM

7 SCHOOLS PARTICIPATED

CATCH My Breath is an evidence-based youth vaping prevention program.

FIT AND FALL PROOF®

19 sites across Region 2

625 participants in an average quarter

SUN SAFETY PROGRAM

6 sun safety presentations

173 youth educated on sun safety

BEHAVIORAL HEALTH

DRUG OVERDOSE PREVENTION

14 Narcan trainings held

168 people trained to use Narcan

Narcan, also known as Naloxone, is a medication that can reverse an opioid overdose.

SUICIDE PREVENTION

124 gun locks distributed

192 people trained in QPR

QPR (Question, Persuade, Refer) is a suicide prevention training.

PRESCRIPTION DRUG SAFETY

Prescription drug safety strategies can help prevent accidental and intentional overdoses. Strategies include locking up medications, monitoring for missing pills, and properly disposing of unused or expired prescriptions.



WE DISTRIBUTED

209 medication lockboxes

45 TimerCap kits

898 drug disposal pouches

988
MATERIALS
DISTRIBUTED

600+

988
brochures

240

yard
signs

2,500

stickers on
coffee cups

PARENTS AS TEACHERS

The Parents as Teachers (PAT) program is designed to provide parents with information, help guide parents through their child's developmental stages and give parents tools for success. Services provided include:

- Personal, in-home visits from certified parent educators offering age-appropriate information
- Hearing, vision, and developmental screenings
- Peer support
- Resource network



HOME VISITATION PROGRAM

601

PERSONAL VISITS CONDUCTED

AVERAGE LENGTH FAMILIES WERE ENROLLED

1.83 YEARS

SERVED

76 FAMILIES
99 CHILDREN



SCREENINGS CONDUCTED

163

hearing & vision
screenings

153

developmental
screenings

POTENTIAL DELAYS/CONCERNS IDENTIFIED



17

Children identified with a
developmental delay/concern



12

Children identified with a
social-emotional delay/concern



3

Children identified with a
hearing delay/concern



1

Children identified with a
vision delay/concern



6

Children identified with a
physical health delay/concern

WIC PROGRAM

WIC (Women, Infants, and Children) is a special supplemental nutrition education program that serves pregnant, breastfeeding, and postpartum women, infants, and children under the age of five. WIC provides nutritious foods, semi-annual health assessments, nutrition education, and referrals to other services to low-income, nutritionally at-risk participants.

WE SERVED

785

families

784

children

232

infants

1,237 NUTRITION EDUCATION
APPOINTMENTS



\$976,899

OF HEALTHY, NUTRITIOUS
FOOD PROVIDED
BY NORTH CENTRAL WIC

99%
OF BENEFITS
UTILIZED
EACH MONTH

ENVIRONMENTAL HEALTH

PROTECT FROM HEALTH THREATS

CHILDCARE CENTERS

116

childcare centers

95

childcare inspections

29

childcare facilities with violations

FOOD ESTABLISHMENTS

802

permitted food establishments

1094

establishment inspections

295

establishments with violations

42

complaints addressed

WATER QUALITY

54

public water systems

0

non-compliant public water systems



SOLID WASTE

14

solid waste facilities

0

complaints about solid waste facilities

SEPTIC SYSTEMS

354

septic system permits

19

complaints addressed

RABIES INVESTIGATIONS

35

suspected rabies cases in animals

1

positively confirmed rabies case

OUR OFFICE LOCATIONS

Nez Perce County
215 10th Street
Lewiston, ID 83501
208.799.3100

Latah County
333 E. Palouse River Drive
Moscow, ID 83843
208.882.7506

Idaho County
903 W. Main
Grangeville, ID 83530
208.983.2842

Clearwater County
105 115th Street
Orofino, ID 83544
208.476.7850

Lewis County
132 N. Hill Street
Kamiah, ID 83536
208.935.2124

Our vision is to make North Central Idaho the place of choice to live, work, play, and grow.



Public Health
Idaho North Central District

WE THANK YOU
FOR YOUR CONTINUED SUPPORT OF
OUR SERVICES